

Starting Design Room ONE as a service

This document will describe an example on how to start Design Room ONE as a service.

In this example we will create and start two services

1. **The Mongo Database**
 2. **The Design Room ONE application using the pm2 framework**
-

Contents

Downloading and installing the Service generation tool	2
Creating the Mongo Database service	3
Creating the Design Room ONE service	4
Checking that the services are functioning	6
The services start properly	6
The services correctly start the database and Design Room ONE.....	6
The services start when the machine restarts	6

Downloading and installing the Service generation tool

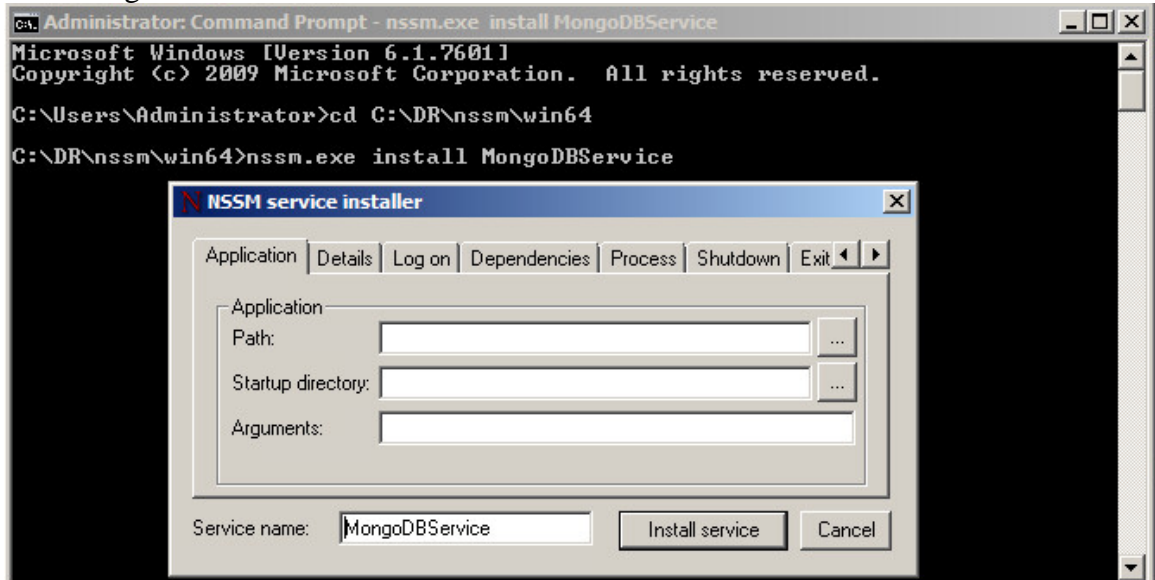
There are many applications that claim to help you setting up services, the one used in this document, NSSM, is just one of many.

1. Download the tool from: <http://nssm.cc/>.
At the time this is written, version 2.24 is the latest stable version
2. Unzip the **nssm** ZIP file to a folder where you want the tool to be running from

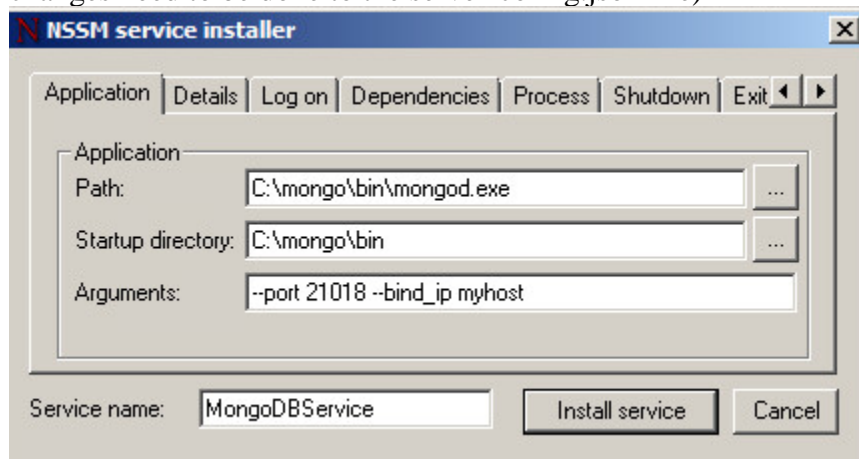
Creating the Mongo Database service

1. Start a command window as *Administrator*
2. Navigate to the newly unzipped directory and continue into either *win32* or *win64*
3. Type: `nssm.exe install MongoDBService`

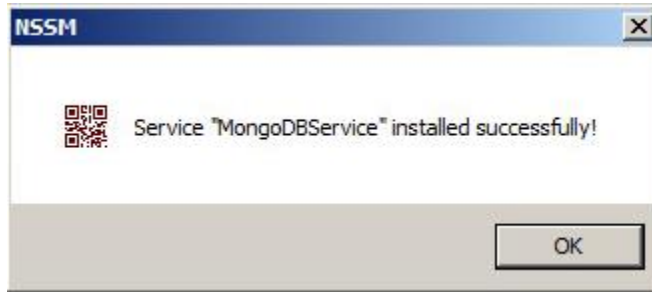
You will get a window like this:



4. - Fill out the form with the path to `mongod.exe`
- Fill out the startup directory
- Optionally, fill out a non-default port and hostname
(Only do this if you do not want to use default values. Also, corresponding changes need to be done to the `server-config.json` file)



5. Click 'Install service'



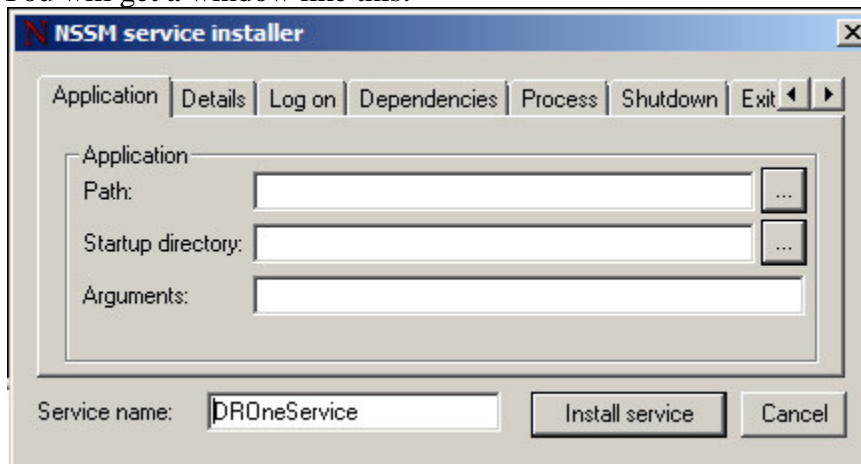
6. Click 'OK' and the service is created

Creating the Design Room ONE service

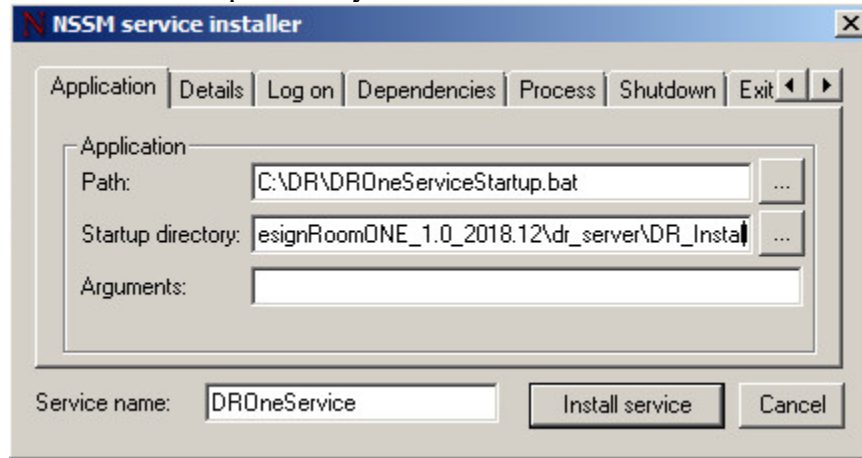
1. Create a bat-file containing the start command
 - a. Name the file DROneServiceStartup.bat
 - b. Add the following content:

```
pm2 start <replace with correct path>\DR_Install\pm2.config.js
```
 - c. Save
2. Start a command window as Administrator
3. Navigate to the nssm directory and continue into either *win32* or *win64*
4. Type: `nssm.exe install DROneService`

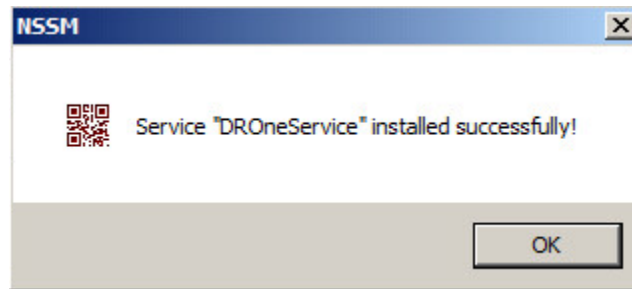
You will get a window like this:



5. Fill out the form with the path to the DROneServiceStartup.bat file
6. Fill out the startup directory



7. Klick 'Install service'



Checking that the services are functioning

The services start properly

1. Open the **Control Panel**
2. Open *Administrative Tools*
3. Open *Services*
4. Right-click the MongoDBService and select *Start*
⇒ The service should start

5. Do the same for the *DROneService*
⇒ The service should start

The services correctly start the database and Design Room ONE

6. Try starting Design Room ONE in a browser
7. Try open a design
⇒ Design Room ONE behaves as expected

The services start when the machine restarts

8. Now, restart the machine
9. Try starting Design Room ONE in a browser
10. Try open a design
⇒ The services should start and you should be able to use Design Room ONE without further steps
⇒ Please also check the Installation instructions for more info on how to use the pm2 framework for process monitoring